

Catalogue

Rubber flooring

NORSK  GUMMI

Telefon: +47 917 35 312

E-post: post@norskgummi.no

Index

Flooring

• Small ribbed	5
• Small ribbed VDE	5
• Medium ribbed	6
• Combi ribbed	6
• Broad ribbed	7
• Industrial tears	7
• Checker	8
• Cross diamond	8
• Diamond	9
• Pyramid	9
• Supergrip	10
• Mohawk	10
• Rice	11
• Decktop	11

Heavy Duty flooring

• Turtle	12
• Rough cloth impression	12
• Cross diamond	13

Stud flooring

• IN32	14
• IN42	14
• IN4028	15
• IN4012	15
• IN4520	14
• IN3023	15
• N25	16

Granulated rubber flooring

• Recyfloor standard	17
• Recyfloor black - asphalt look	17
• Tile carrier	18

Sports flooring

• Ultrafloor	19
• Wet room flooring	20

Small ribbed



quality : SBR/NR
 hardness : 70° Shore A ± 5°
 working temperature : -10°C / +70°C
 execution : small ribbed top, reverse cloth impression

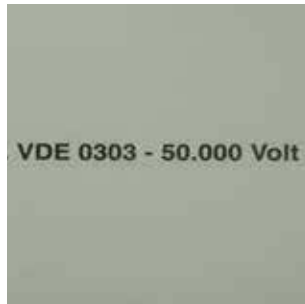
Application:

Anti-Slip protection, commercial vehicles, construction sites, entryways, indoor/outdoor aisle ways, industrial shelves, scraper mats, shelf liners, toolbox liners, van flooring.

article code	thickness (mm)	width (mm)	length (mm)	colour	execution
30100100	3	1000	10000	black	standard
30100120	3	1200	10000	black	standard
30100130	3	1200	20000	black	standard
30100140	3	1400	10000	black	standard
30100180	3	1800	10000	black	standard
30100200	3	2000	10000	black	standard
30102120	3	1200	10000	black	oil resistant
30101224	3	1200	10000	black	with insertion
30101100	3	1000	10000	grey	standard
30101120	3	1200	10000	grey	standard
30101140	3	1400	10000	grey	standard
30101180	3	1200	10000	green	standard

Small ribbed VDE

According to VDE030 / EM60243 - 1:10919 / IEC61111



quality : SBR/NR
 hardness : 65° Shore A ± 5°
 working temperature : -20°C / +70°C
 execution : small ribbed top, reverse cloth impression

Application:

Anti-Slip protection, commercial vehicles, construction sites, entryways, indoor/outdoor aisle ways, industrial shelves, scraper mats, shelf liners, toolbox liners, van flooring.

article code	thickness (mm)	width (mm)	length (mm)	colour	withstand voltage
30104970	3	1000	10000	grey	30.000 Volt
30104980	3	1200	10000	grey	30.000 Volt
30104990	4,5	1000	10000	grey	50.000 Volt
30105000	4,5	1200	10000	grey	50.000 Volt

Medium ribbed



quality : SBR/NR
 hardness : 65° Shore A ± 5°
 working temperature : -30°C / +60°C
 execution : medium ribbed top, reverse cloth impression

Application

Anti-Slip protection, commercial vehicles, construction sites, entryways, indoor/outdoor aisle ways, industrial shelves, scraper mats, shelf liners, toolbox liners, van flooring.

article code	thickness (mm)	width (mm)	length (mm)	colour
30111001	3	1200	10000	black
30111002	3	1200	10000	grey
30111005	4	1600	10000	black

Combi ribbed



quality : SBR/NR
 hardness : 80° Shore A ± 5°
 working temperature : -30°C / +60°C
 execution : combi ribbed top, reverse cloth impression

Application

Anti-Slip protection, commercial vehicles, construction sites, entryways, indoor/outdoor aisle ways, industrial shelves, scraper mats, shelf liners, toolbox liners, van flooring.

article code	thickness (mm)	width (mm)	length (mm)	colour
30110089	3	1000	10000	black
30110090	3	1200	10000	black
30110091	3	1200	10000	grey
30115001	3	1500	10000	black

Broad ribbed



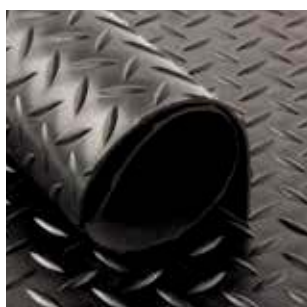
quality : SBR/NR
 hardness : 65° Shore A ± 5°
 working temperature : -30°C / +60°C
 execution : broadribbed top, reverse cloth impression

Application

Anti-Slip protection, commercial vehicles, construction sites, entryways, indoor/outdoor aisle ways, industrial shelves, scraper mats, shelf liners, toolbox liners, van flooring.

article code	thickness (mm)	width (mm)	length (mm)	colour
30120100	5	1000	10000	black
30120120	5	1200	10000	black
30120101	6	1000	10000	black
30120121	6	1200	10000	black
30120122	8	1200	10000	black
30120140	6	1400	10000	black
30120200	6	2000	10000	black

Industrial tears



quality : SBR/NR
 hardness : 70° Shore A ± 5°
 working temperature : -10°C / +70°C
 execution : upper side diamond profile, reverse cloth impression

Application

Anti-Slip protection, commercial vehicles, construction sites, entryways, indoor/outdoor aisle ways, industrial shelves, scraper mats, shelf liners, toolbox liners, van flooring.

article code	thickness (mm)	width (mm)	length (mm)	colour
30140100	3	1000	10000	black
30140150	3	1500	10000	black
30140152	3	1500	10000	grey
30140151	5	1200	10000	black

Checker



quality : SBR/NR
 hardness : 70° Shore A ± 5°
 working temperature : -15°C / +70°C
 execution : upper side checker profile, reverse cloth impression

Application

Anti-Slip protection, commercial vehicles, construction sites, entryways, indoor/outdoor aisle ways, industrial shelves, scraper mats, shelf liners, toolbox liners, van flooring.

article code	thickness (mm)	width (mm)	length (mm)	colour	execution
30150142	3	1400	10000	black	standard
30150148	3	1600	10000	black	standard
30150160	3	1400	10000	grey	standard
30150144	5	1400	10000	black	standard

Cross diamond



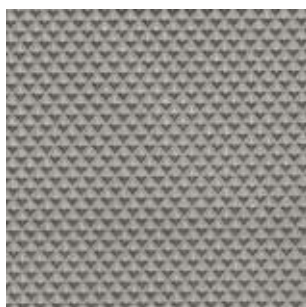
quality : SBR/NR
 hardness : 70° Shore A ± 5°
 working temperature : -10°C / +70°C
 execution : upper side cross diamond profile, reverse cloth impression

Application

Anti-Slip protection, commercial vehicles, construction sites, entryways, indoor/outdoor aisle ways, industrial shelves, scraper mats, shelf liners, toolbox liners, van flooring.

article code	thickness (mm)	width (mm)	length (mm)	colour
30145090	5	900	10000	black
30145180	5	1800	10000	black
30145200	5	2000	10000	black

Diamond



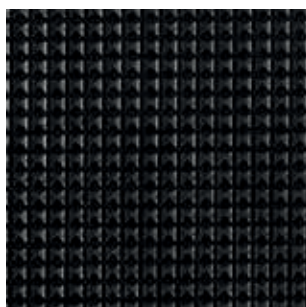
quality : SBR/NR
 hardness : 70° Shore A ± 5°
 working temperature : -10°C / +70°C
 execution : upper side diamond profile, reverse with cloth impression

Application

Anti-Slip protection, commercial vehicles, construction sites, entryways, indoor/outdoor aisle ways, industrial shelves, scraper mats, shelf liners, toolbox liners, van flooring.

article code	thickness (mm)	width (mm)	length (mm)	colour
30190201	2,6	1500	10000	black
30190206	2,6	1500	10000	grey

Pyramid



quality : SBR/NR
 hardness : 70° Shore A ± 5°
 working temperature : -10°C / +70°C
 execution : upper side Pyramid profile, reverse cloth impression

Application

Anti-Slip protection, commercial vehicles, construction sites, entryways, indoor/outdoor aisle ways, industrial shelves, scraper mats, shelf liners, toolbox liners, van flooring.

article code	thickness (mm)	width (mm)	length (mm)	colour
30190100	4	1000	10000	black
30190101	4	1200	10000	black

Supergrip



quality : SBR/NR
 hardness : 70° Shore A ± 5°
 working temperature : -10°C / +70°C
 execution : both sides cloth impression

Application

Anti-Slip protection, commercial vehicles, construction sites, entryways, indoor/outdoor aisle ways, industrial shelves, scraper mats, shelf liners, toolbox liners, van flooring.

article code	thickness (mm)	width (mm)	length (mm)	colour
30280110	3	1600	10000	black
30280120	3	1800	10000	black

Mohawk



quality : SBR/NR
 hardness : 70° Shore A ± 5°
 working temperature : -15°C / +70°C
 execution : upper side small turtle profile, reverse cloth impression

Application

Anti-Slip protection, commercial vehicles, construction sites, entryways, indoor/outdoor aisle ways, industrial shelves, scraper mats, shelf liners, toolbox liners, van flooring.

article code	thickness (mm)	width (mm)	length (mm)	colour
30251157	3	1400	20000	black
30251158	3	1600	10000	black
30251159	3	1600	10000	grey
30251161	5	1600	10000	black

Rice



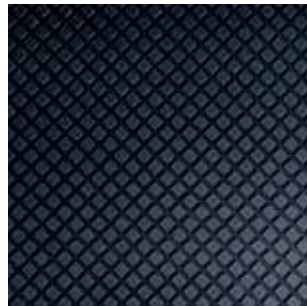
quality : SBR/NR
 hardness : 70° Shore A ± 5°
 working temperature : -15°C / +70°C
 execution : upper side rice grain profile, reverse cloth impression

Application

Anti-Slip protection, commercial vehicles, construction sites, entryways, indoor/outdoor aisle ways, industrial shelves, scraper mats, shelf liners, toolbox liners, van flooring.

article code	thickness (mm)	width (mm)	length (mm)	colour	execution
30190300	3	1400	10000	black	standard
30190500	3	1600	10000	black	standard

Decktop



quality : SBR/NR
 hardness : 70° Shore A ± 5°
 working temperature : -10°C / +70°C
 execution : upper side rhombic profile, reverse with cloth impression

Application

Anti-Slip protection, commercial vehicles, construction sites, entryways, indoor/outdoor aisle ways, industrial shelves, scraper mats, shelf liners, toolbox liners, van flooring.

article code	thickness (mm)	width (mm)	length (mm)	colour
30241040	3,2	1000	10000	black

Turtle

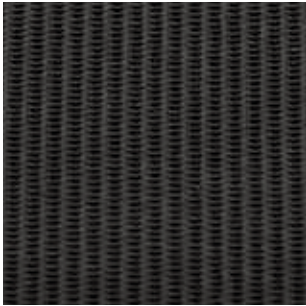


quality : SBR/NR
 hardness : 70° Shore A ± 5°
 working temperature : -15°C / +70°C
 execution : upper side turtle profile , reverse cloth impression

Application
 Horse, livestock, stable and trailer flooring.

article code	thickness (mm)	width (mm)	length (mm)	colour
30263165	6	1650	10000	black
30264165	8	1650	10000	black
30264180	8	1800	10000	black
30264200	8	2000	10000	black
30275100	10	1800	10000	black
30275201	10	2000	10000	black

Rough cloth impression



quality : SBR/NR
 hardness : 70° Shore A ± 5°
 working temperature : -10°C / +70°C
 execution : both sides rough cloth impression

Application
 Horse, livestock, stable and trailer flooring.

article code	thickness (mm)	width (mm)	length (mm)	colour
30280180	8	1800	10000	black
30280200	8	2000	10000	black

Cross Diamond



quality : SBR/NR
hardness : 60° Shore A ± 5°
working temperature : -20°C / +70°C
execution : upper side cross cross diamond profile,
reverse cloth impression

Application

Anti-Slip protection, commercial vehicles, construction sites, entryways, indoor/outdoor aisle ways, van flooring.

article code	thickness (mm)	width (mm)	length (mm)	colour
30148090	8	900	10000	black
30148180	8	1800	10000	black
30148200	8	2000	10000	black

IN32 and IN42



quality : SBR/NR
 hardness : 70° Shore A ± 5°
 working temperature : -20°C / +70°C
 execution : upper side studded profile, reverse cloth impression



Application

Anti-Slip protection, commercial vehicles, construction sites, entryways, indoor/outdoor aisle ways, industrial shelves, scraper mats, shelf liners, toolbox liners, van flooring.

article code	thickness (mm)	width (mm)	length (mm)	colour	stud (ø mm)	stud height (mm)
30160100	3	1000	10000	black	22	1
30160101	3	1200	10000	black	22	1
30160102	3	1500	10000	black	22	1
30160108	3	1600	10000	black	22	1
30160103	3	1000	10000	grey	22	1
30160104	3	1200	10000	grey	22	1
30160120	4	1000	10000	black	22	1
30160121	4	1200	10000	black	22	1
30160130	4	1000	10000	grey	22	1
30160131	4	1200	10000	grey	22	1

IN4028



quality : SBR/NR
 hardness : 70° Shore A ± 5°
 working temperature : -10°C / +70°C
 execution : upper side studded profile, reverse cloth impression



Application

Anti-Slip protection, commercial vehicles, construction sites, entryways, indoor/outdoor aisle ways, industrial shelves, scraper mats, shelf liners, toolbox liners, van flooring.



article code	thickness (mm)	width (mm)	length (mm)	colour	stud (ø mm)	stud height (mm)
30161144	4	1450	10000	black	28	0,5
30161145	4	1450	10000	grey	28	0,5
30161147	4	1450	10000	brown	28	0,5
30161148	4	1450	10000	terracotta	28	0,5

IN4012



quality : SBR/NR
 hardness : 70° Shore A ± 5°
 working temperature : -10°C / +70°C
 execution : upper side studded profile, reverse cloth impression

Application

Anti-Slip protection, commercial vehicles, construction sites, entryways, indoor/outdoor aisle ways, industrial shelves, scraper mats, shelf liners, toolbox liners, van flooring.

article code	thickness (mm)	width (mm)	length (mm)	colour	stud (ø mm)	stud height (mm)
30165010	4	1500	10000	black	12	1
30165012	4	1500	10000	grey	12	1

IN4520



quality : SBR/NR
 hardness : 70° Shore A ± 5°
 working temperature : -20°C / +90°C
 execution : upper side studded profile, reverse grinded

Application

Anti-Slip protection, commercial vehicles, construction sites, entryways, indoor/outdoor aisle ways, industrial shelves, scraper mats, shelf liners, toolbox liners, van flooring.

article code	thickness (mm)	width (mm)	length (mm)	colour	stud (ø mm)	stud height (mm)
30175001	4,5	1000	10000	black	22	2
30175011	4,5	1000	10000	black (oil resistant)	22	2
30175020	4,5	1000	10000	black (outdoor quality)	22	2

IN3023



quality : SBR/NR
 hardness : 70° Shore A ± 5°
 working temperature : -20°C / +90°C
 execution : upper side studded profile, reverse cloth impression

Application

Design rubber flooring for use at kitchens, living rooms, showrooms, boutiques, offices, entrance halls.

article code	thickness (mm)	width (mm)	length (mm)	colour	stud (ø mm)	stud height (mm)
30160094	3	1000	10000	black	23	0,8
30160095	3	1000	10000	grey	23	0,8

N25



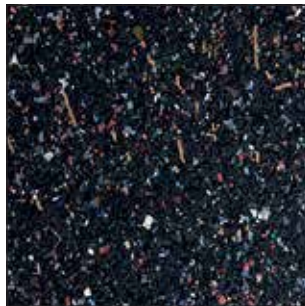
quality : SBR/NR
 hardness : 75° Shore A ± 5°
 working temperature : -10°C / +70°C
 execution : upper side studded profile, reverse cloth impression

Application

Design rubber flooring for use at kitchens, living rooms, showrooms, boutiques, offices, entrance halls.

article code	thickness (mm)	width (mm)	length (mm)	colour	stud (ø mm)	stud height (mm)
64001101	2,6	500	500	black	26	0,6

Recyfloor standard



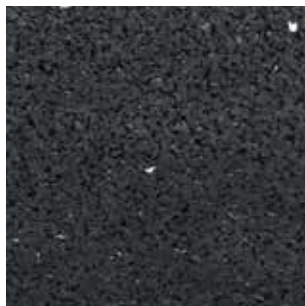
quality : PU bonded Recycled rubber
 hardness : 35° Shore A ± 5°
 working temperature : -30°C / +80°C
 execution : black granulate with colored speckles

Application

Made from recycled rubber. Universal product for sound insulation and vibration absorption. Can be used as underlay under parquet, laminate, carpeting and ceramic tiles as well as under linoleum and PVC flooring. It can also be used for vibration absorption of machines, elevator motors, pumps, ventilation systems.

article code	thickness (mm)	width (mm)	length (mm)
33031500	3	1500	20000
33041500	4	1500	20000
33051500	5	1500	20000
33061500	6	1500	20000
33081500	8	1500	10000
33101500	10	1500	10000
33151500	15	1500	10000
33201500	20	1500	5000

Recyfloor black - asphalt look



quality : PU bonded Recycled rubber
 hardness : 35° Shore A ± 5°
 working temperature : -30°C / +80°C
 execution : black granules

Application

Made from recycled rubber. Universal product for sound insulation and vibration absorption. Can be used as underlay under parquet, laminate, carpeting and ceramic tiles as well as under linoleum and PVC flooring. It can also be used for vibration absorption of machines, elevator motors, pumps, ventilation systems.

article code	thickness (mm)	width (mm)	length (mm)
34021500	2	1500	11000
34041500	4	1500	20000
34061500	6	1500	20000
34081500	8	1500	10000
34101500	10	1500	10000

Tile carrier



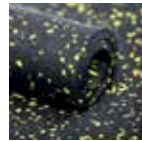
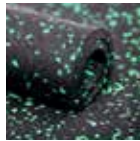
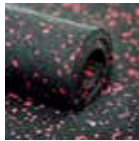
quality : recycled rubber with PU bonding agent
 hardness : 35° Shore A ± 5°
 working temperature : -30°C / +80°C
 execution : black granules with coloured speckles

Application

Made from recycled rubber. For vibration absorption of machines, elevator motors, pumps, ventilation systems.

article code	thickness (mm)	dimensions (mm)
33000001	10	100 x 100
33000011	10	150 x 150
33000021	10	200 x 200
33000002	15	100 x 100
33000012	15	150 x 150
33000022	15	200 x 200
33000003	20	100 x 100
33000013	20	150 x 150
33000023	20	200 x 200

Ultrafloor



quality : recycled rubber with PU bonding agent
 hardness : 60° Shore A ± 5°
 working temperature : -30°C / +80°C
 execution : black granules with coloured speckles

Application

Ultrafloor is the recommended choice for high-traffic active spaces. Sportfloor features a dense rubber core that provides excellent, high-impact durability and superior slip resistance in wet or dry conditions. Sportfloor also combines anti-fatigue and ergonomic comfort properties with very low maintenance. Containing a 60 to 85% recycled content range and low VOC emissions, Sportfloor is widely regarded as the premiere “green” resilient flooring choice for fitness centres.

article code	thickness (mm)	width (mm)	length (mm)	colour	weight (kg/m ²)
33801228	6	1500	20000	black/grey	6
33801232	8	1500	15000	black/grey	8
33801226	6	1500	20000	black/blue	6
33801227	8	1500	15000	black/blue	8
33801224	6	1500	20000	black/green	6
33801230	8	1500	15000	black/green	8
33801236	6	1500	20000	black/red	6
33801237	8	1500	15000	black/red	8
33801238	6	1500	2 0000	black/yellow	6

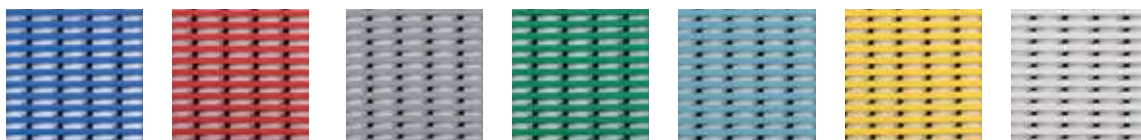
Wet room flooring



quality : soft PVC
 working temperature : -5°C tot +60°C
 execution : soft PVC with ribbed profile and drainage
 canals

Application

Swimming pools, locker rooms, saunas



article code	thickness (mm)	width (mm)	length (mm)	colour
65001035	12	600	10000	blue
65001030	12	1000	10000	blue
65003037	12	1200	10000	blue
65001034	12	1000	10000	red
65001036	12	1000	10000	grey
65001038	12	1000	10000	green
65001039	12	1000	10000	mint
65001040	12	1000	10000	yellow
65001041	12	1000	10000	ivory